

## NEWSLETTER NO. 1

December 2009

### Introduction by Arne Gehlhaar, RISING Project Manager

The introduction of River Information Services (RIS) in Europe is one of the great success stories in European transport policy over the last decades. Started out as Research and Development activities, RIS systems have become or are now becoming a reality in countries all over Europe.

The RISING project sets out to take the next step in this development - harnessing the potential of River Information Services for the benefit of the inland waterways transport industry and related logistics players.

RIS is the key element in the efforts to modernize inland waterways transport (IWT) and to streamline IWT processes in intermodal transport chains aiming at shifting transport to a cleaner and safer mode.

Project website: [www.rising.eu](http://www.rising.eu)

### First Industry Forum for the Danube region takes place in Austria

#### Linz hosts first RISING Industry Forum for the Danube region

The participants who came from different fields of logistics, whether authorities, consultants, logistics service providers, representatives of the industry, or of the press, had a common goal: to discuss the benefits of RIS for transport logistics purposes with other partners of the inland navigation sector, as well as to present their requirements and expectations for RIS in the sector of transport and logistics.

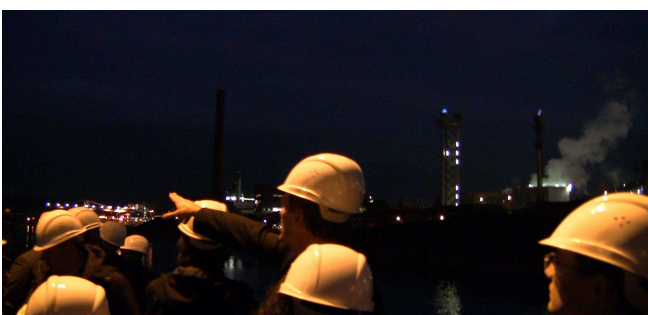
On the agenda of this event were presentations of different aspects of RISING and a moderated discussion on the use of RIS for transport and logistics processes and services. The event concluded with a bus tour of the facilities of Ennschafen, Linz AG

and voestalpine and a visit of the ILL transshipment site. Ennschafen Managing Director, Christian Steindl presented the latest developments in his highly modernized port facilities with the erection of a new quay wall. Franz Frisch, responsible for Transshipment and Technics at Linz AG showed the assets and functions of the container terminal. Finally, Ralph Gallob, CEO of ILL gave a guided tour of his transshipment site and of parts of the voestalpine port.

**All presentations can be downloaded from the RISING website: [www.rising.eu](http://www.rising.eu)**

#### Industry Forums

Within RISING, the project partners reach out to commercial enterprises who are stakeholders in this field. They are asked to provide their requirements and feedbacks regarding RIS and new RIS services for transport and logistics purposes and support the dissemination of the project results and outcomes in the co-modal transport and logistics sector. Altogether 12 Industry Forums are foreseen during the project, 6 for the Danube region, 3 for the Rhine and 3 for the German waterways.





## From the editor's desk:

In each issue of the RISING newsletter, we will run an interview with one of the RISING project partners. In this issue:

### Dr. Ralph Gallob, CEO of ILL

#### Which challenges are you currently facing with your transport and logistics processes and operations in your daily business?

The major problem we are facing every day is that our customers do not plan their transport needs in an efficient way. As a result, the ILL as third party logistics service provider is not able to plan either – we can only react! The control of logistic processes must therefore take place in a much shorter time span than it would be in a planning process. Our advantage however lies in the fact, that we do have very robust and flexible planning- and control-systems. This gives us the opportunity to handle these problems in a better way.

#### What type of traffic-related information (RIS) do you need for your logistics processes? In terms of planning, execution and completion?

Primarily we need the current data of the infrastructure condition. This means that we require information about the water level, the lock status and the status of the ports. In addition we also need the corresponding forecasts in order to plan our processes. In this context the two terms “Event Management” and “Tracking&Tracing” play an important role and are essential for the planning and control of inland waterway transport.

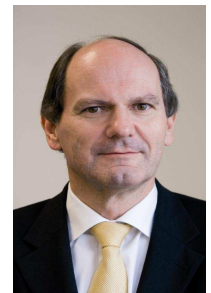
[www.ill.co.at](http://www.ill.co.at)

#### ILL is a big player in the field of transport and logistics in Austria. How do you perceive your role in and the contributions ILL can make to the RISING project?

The RISING-project plays an important role concerning the future of inland waterway transport. Acting as demonstrator in this project we have the chance to act as forerunner and to provide others with our experience and know-how in inland waterway transport.

#### To what extent do you think that RISING can contribute to the overall objective of making Inland Waterway Transport (IWT) a more attractive part of the European transport and logistics chains?

In order to make inland waterway more attractive, it is necessary to find a solution in which river information services can be offered in a harmonised way – also across borders. The transparency of the vessel supply chain has to be increased. Furthermore the multimodal needs of transport have to be considered, because the efficient use of different transport modes will result in an ideal and sustainable usage of resources. This does not only affect our environment in a positive way but also contributes to an improved traffic situation.



## Industrie-Logistik-Linz GmbH & Co KG (ILL)

is acting as demonstrator in the RISING-project. ILL was founded 1993 as a logistic service provider, originating of the former dispatch department of VOEST ALPINE Stahl Linz GmbH. ILL is a service company with the head office in Linz (AT) and other offices in Austria and the Netherlands. Currently ILL is handling numerous transport activities along the

corridor from Linz (Austria) to Moerdijk (the Netherlands). Shipments along the corridor are transported by truck, ship and rail. An important transshipment node for ILL is the port of Moerdijk (NL), which is also the site of an ILL subsidiary. The majority of shipments to overseas are transloaded onto coastal or ocean ships. ([www.ill.co.at](http://www.ill.co.at))

The **aim of the RISING project and the ILL demonstrator case** is to monitor the whole transport corridor, which makes the tracking of the vessel from the port-warehouse of ILL to the end customer possible. Especially the transport of cargo from an inland vessel to a sea-going ship in Moerdijk (NL) shall be planned precisely.

**Concerning RIS-Services, the following information is needed.** Before the inland vessel leaves the Port of Linz (AT) ILL has to prepare and manage many internal processes based on internal IT systems (i-Logistics, ILL-

System). Beginning with the process “Planning Forecast” and ending with “Vessel leaving port” all other processes will be activated, requiring the involvement of ILL and its business partners who will process the data, information and documents. Concerning RIS-Services, the following traffic-related information is needed to support the transport and logistics processes and operations of Industrie-Logistik-Linz GmbH & Co KG.

Read more: [www.rising.eu](http://www.rising.eu)

## Kick-Off meeting RISING Work packages (WP) 2 and 4

### Core activities of the RISING project

On the 1 December, two Kick-off meetings for Work packages 2 and 4 were held in Bremen. They follow the Kick-off of **Work package 3: Voyage Planning** earlier this year. This WP will plan and support IWT operations and develop software on the basis of Inland ECDIS. This will enable inland waterway operators and/or freight forwarders to determine the optimum combination between the size of a vessel and the route as well as the calculation of a realistic Estimated Time of Arrival (ETA)

### Work package 2: Event Management

The aim of this WP is to offer optimal interface between existing transport management systems and the Event Management component and to facilitate the integration of events into existing operational transport systems.

### Work package 4: RIS-TLS

The aim of this WP is to identify IWT services which provide benefits for transport and logistics processes, such as RIS information for voyage planning, fleet management, event management and port management

The meeting was hosted by ISL.

<b>Date</b>	1 December 2009
<b>Location</b>	ISL– Institute of Shipping Economics and Logistics Universitätsallee 11 – 13, 28359 Bremen
<b>Duration</b>	Kick-off WP 2: 09:00 – 13:00, Kick-off WP 4: 13:00 – 16:00
<b>Participants</b>	Members of WP2 and WP4



## In retrospect: PLATINA Sub WP5.2 Working Meeting

On 18 November, a coordination meeting among the projects PLATINA, IRIS Europe II and RISING as well as the 4 RIS Expert Groups (Notices to Skippers, Tracking & Tracing, Electronic Reporting, Inland ECDIS) was held at the Tech Gate in Vienna. The meeting was hosted by via donau and chaired by the PLATINA project. The main objective of this meeting was to inform each other about the main activities and to identify tasks and issues that require coordination among the projects and the Expert Groups in order to avoid duplication of work and to ensure efficient communication and cooperation.

<b>Location</b>	via donau – Österreichische Wasserstraßen-Gesellschaft mbH Donau-City-Straße 1 A-1220 Wien
<b>Duration</b>	9:00 – 17:00
<b>Participants</b>	DG-TREN: represented by Astrid Schlewing (Project Officer) RIS Expert Groups members RISING representatives IRIS Europe II representatives PLATINA representatives

The presentations can be downloaded at the EU RIS portal under:

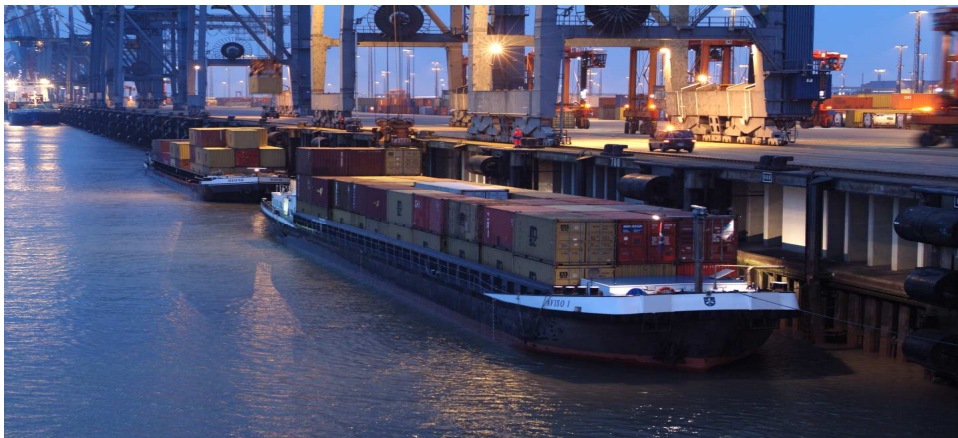
<http://www.ris.eu/documents/general-ris?t=RIS%20Common%20issues%20meetings>

## Advisory Committees

Within the RISING project, Advisory Committee meetings have been foreseen which will validate and evaluate project outcomes and results from a strategic and political point of view. Advisory Committee participants are European and national federations and associations - non-members of the RISING Consortium – who represent the IWT and co-modal transport and logistics sector. With their general and political feedback related to European strategies, the members of the Advisory Committees can help to

reflect on the RISING project trends, developments, and technologies.

The regional Industry Forums and the Advisory Committees form a dissemination platform within which project partners together with external stakeholders will discuss and validate the RISING working activities and outputs. **The first Advisory Committee is scheduled to take place on 9 February 2010 in Brussels**



## Contact

### Dissemination:

Annick Javor

Promotie Binnenvaart Vlaanderen  
Armand Hertzstraat 23  
3500 Hasselt  
BELGIUM

Tel.: +32 11 23 06 06

Fax: +32 11 23 06 09

E-Mail: [annickjavor@binnenvaart.be](mailto:annickjavor@binnenvaart.be)

Web: [www.binnenvaart.be](http://www.binnenvaart.be)

### Project Coordinator:

Arne Gehlhaar

Institut für Seeverkehrswirtschaft und Logistik  
Universitätsallee 11–13  
28359 Bremen  
GERMANY

Tel.: +49 421 22096-49

Fax: +49 421 22096-55

E-Mail: [gehlhaar@isl.org](mailto:gehlhaar@isl.org)

Web: [www.isl.org](http://www.isl.org)

This is the first issue of the newsletter of the RISING project. It is one of 6 which will cover all the aspects and partners of the project. This newsletter can be downloaded at the RISING website: [www.rising.eu](http://www.rising.eu)



RISING is co-financed by the European Commission (DG-TREN) within the 7th Framework Programme for Research and Technological Development.